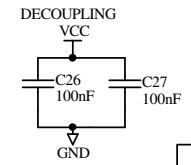


CAN Bus

Schematic for connecting the MCP2515 CAN Controller IC to the SPI bus on a VM-1 Controller.
 Note: the second I2C Bus signals are used for chip select and interrupt signals, so the 2nd I2C Bus can't be used.



CAN Bus		Micro-Robotics Ltd. The Old Maltings 135 Ditton Walk Cambridge CB5 8QB Tel. +44 (0) 1223 523100
Revision:		
Date:	10-Apr-2007 11:09:00	
Sheet 1 of 1		
File: C:\Documents and Settings\karl\Desktop\CANBus.sch		